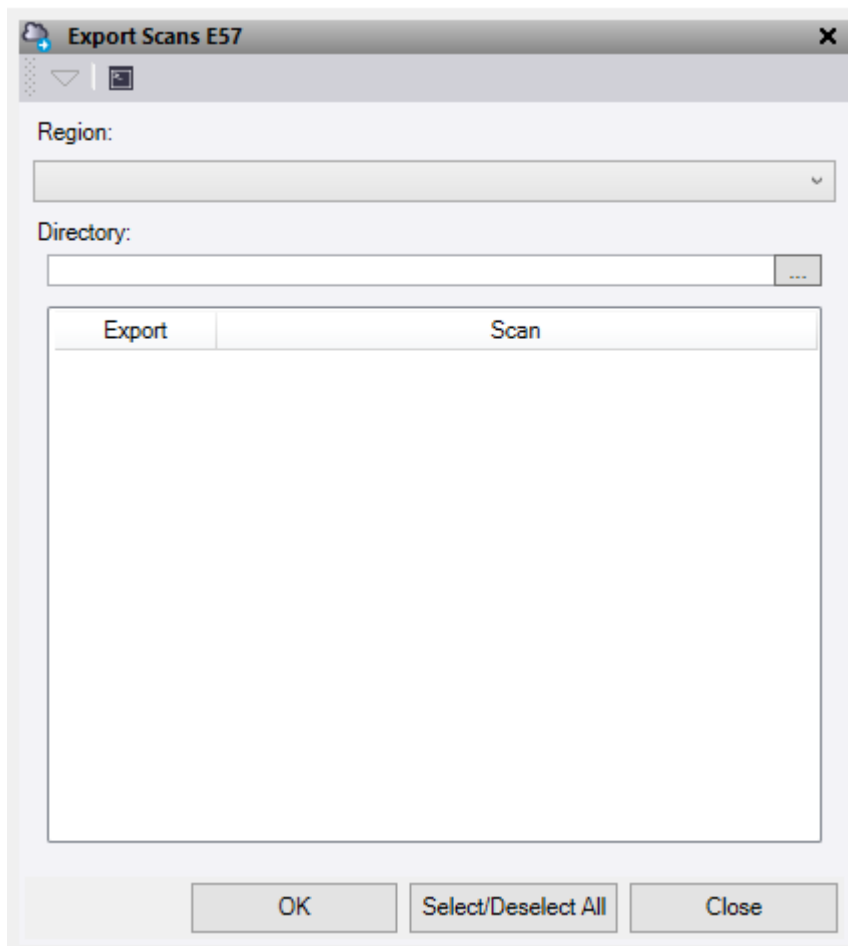




## Command Description

The Export Scans E57 command enables you to export a Region of a point cloud to E57 format with each scan station going into a separate file.



1. Pick the Point Cloud **Region** required to be exported from the drop-down menu.
2. Locate the **Directory** folder that you are saving the E57 files in.
3. Do either of the following:
  - Tick the individual scans to export as separate files.
  - Press the **Select/Deselect All** button to select all scans in the list.
4. Press OK to export selected scan stations as individual files.